

**Wayne County ARC 2015 Illicit Discharge Elimination Plan (IDEP)**  
**Activities**  
**Work Plan**

**Task 1: Field Investigations (\$33,000)**

**Task 1a: Field Screening Priority Areas**

WQMD will collect samples at 48 to 50 sites in the Wayne County priority areas in the Rouge River Watershed once in 2015 during dry weather conditions. The purpose of the sampling is to help isolate/refine the priority areas to focus future collaborative IDEP Advanced Investigations. *Escherichia coli* (*E. coli*) analysis will be performed on the water samples collected. WQMD will select sites consistent with Table 1 from the ARC TC1 Work Plan as follows:

- U15-Bell Branch u/s of 6 Mile Road, within Livonia,
- D62-Tonquish Creek u/s of Joy Road within Plymouth and Plymouth Twp,
- G97-Lower Branch u/s of Henry Ruff Road within Wayne, Westland, Romulus and the Lower 1 communities of Canton Twp, Plymouth Twp and Van Buren Twp.

**Task 1b: Advanced Investigations**

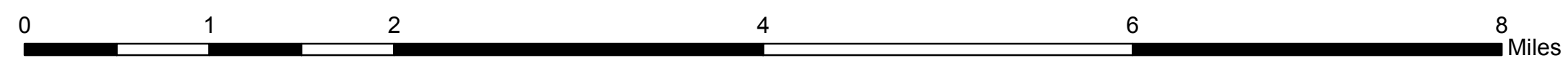
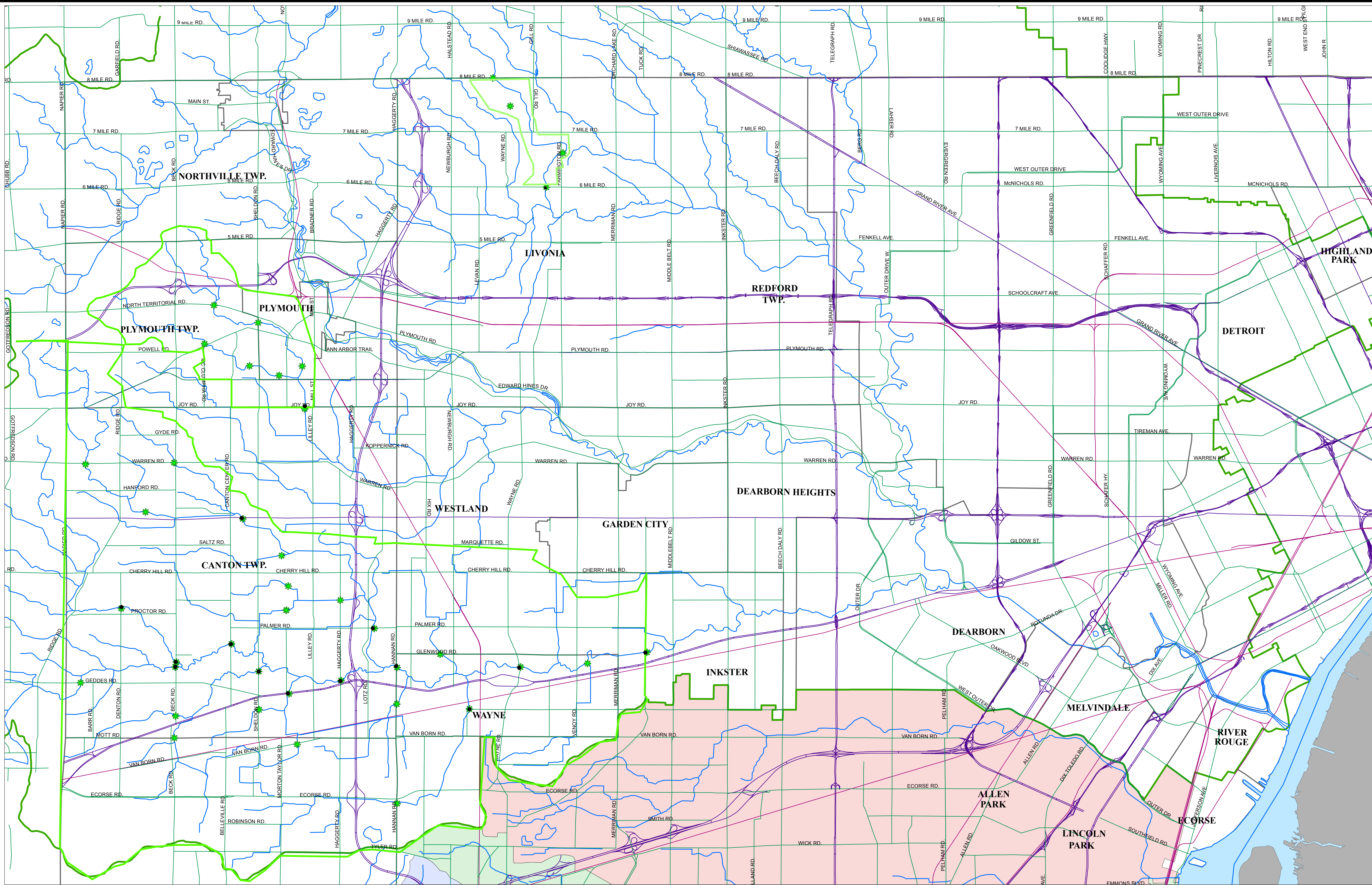
WQMD will work with the local community to perform investigative monitoring of outfalls, manholes, or surface waters based information developed in Task 1 and/or complaints or referrals received from ARC members within the priority areas listed in Task 1a. Investigation may include visual observations, the collection of samples and analysis for parameters such as *E. coli*, surfactants, ammonia, and conductivity, CCTV inspections, and/or dye testing.

**Task 2: IDEP Training (\$2,000)**

WQMD along with ARC staff will hold an IDEP Investigator Training Workshop at place and time determined by the Washtenaw County Water Resources Commissioner's Office consistent with the approved Regional Training Plan. In addition to providing staff WQMD will set up the problem solving exercise and print and mail the training certificates.

**Task 3: Reporting (\$2,000)**

A written summary of activities and results will be provided at ARC Technical Committees and for purposes of the ARC's Annual Report.



**ARC IDEP Field Map**  
**July 2015**  
*E. coli*

**Legend**

- ★ ARC sample locations 2015
- roadcity arc
- 2005 TMDL site
- Priority Areas

