

**Wayne County Department of Public Services
Proposed ARC 2020 IDEP Work Plan
Accepted by: ARC Technical Committee on 3/6/2020**

Field Investigations

City of Plymouth

Wayne County Department of Public Services - Environmental Services Division (ESD) will work with the City of Plymouth and ARC staff to perform collaborative illicit discharge elimination plan (IDEP) investigations as described in Table 1.

Table 1: City of Plymouth Activities

MS4 Area	Advanced Investigation Activities	Receiving Water
Park Street	<ul style="list-style-type: none"> • Coordinate with the City for enforcement and correction on the illicit connections discovered in 2018, and those found in 2019. • Confirm correction of illicit connections (four residences) • Re-sample the Park Street outfall and Mill Street inlets after illicit connection corrections are confirmed. <p>Figure 1 below identifies the basic work area.</p>	Middle Branch in Plymouth
Outfall PY8	<p>Complete investigation of the MS4 area- televising, sampling and dye testing of residential properties along Penniman Street to identify illicit connections for correction.</p> <ul style="list-style-type: none"> • Perform additional manhole sampling in the investigation area, as needed • Coordinate with City of Plymouth to issue dye testing notification letters to the residences in the investigation area, if residential dye testing is needed • Schedule appointments, perform dye-test inspections and track results. • Coordinate with the City for enforcement and correction on the illicit connections that may be discovered • Re-sample Outfall PY8 after illicit connection corrections have been discovered/confirmed corrected. <p>Figure 2 below identifies the investigation area</p>	North Branch Tonquish Creek
Harvey Street	<p>Coordinate with City and ARC staff to perform additional manhole inspections, sample collection and lab analysis in the Harvey Street area if needed, and a resample of the outfall .</p> <ul style="list-style-type: none"> • The City of Plymouth will review CCTV of the storm sewer segment on Jener/Linden Street, and if necessary, perform residential dye testing with assistance from ESD. If needed, ESD will perform additional storm sewer manhole testing, • ESD will perform and/or support the City’s dye-testing of residences. • Coordinate with the City for enforcement and correction on 	Byron Creek tributary to South Branch Tonquish Creek

	<p>the illicit connections that may be discovered</p> <ul style="list-style-type: none"> • Re-sample the Harvey Street outfall after illicit connection corrections have been discovered/ confirmed corrected <p>Figure 3 below identifies the basic work area</p>	
--	---	--

City of Livonia

ESD will work with the City of Livonia and ARC staff to perform collaborative illicit discharge elimination plan (IDEP) investigations as described in Table 2.

Table 2: City of Livonia Activities

MS4 Area	Advanced Investigation Activities	Receiving Water
Outfall U2008221	<p>Complete investigation of the MS4 area- televising, sampling and dye testing of commercial and or/residential properties along Levan Road to identify illicit connections for correction.</p> <ul style="list-style-type: none"> • Coordinate with the ARC and City of Livonia to further delineate the drainage area of the outfall as needed • Coordinate with City and ARC staff to perform additional manhole inspections, sample collection and lab analysis in the Outfall U2008221 drainage area • Perform additional sampling once the outfall drainage area is delineated • The City of Livonia will televise the storm sewer upstream of Outfall U2008221, if needed • Coordinate with the City of Livonia to schedule appointments, perform dye-test inspections and track results, if dye tests are needed. • Coordinate with the City for enforcement and correction on the illicit connections that may be discovered • Re-sample outfall U2008221 after further investigation and illicit connection corrections (if any) are confirmed. <p>Figure 4 below identifies the basic work area.</p>	Bakewell Drain, an Upper Rouge tributary
42-inch outfall Levan Road South	<p>Complete investigation of the MS4 area- televising, sampling and dye testing of commercial and/or residential properties along Levan Road to identify illicit connections for correction.</p> <ul style="list-style-type: none"> • Coordinate with City of Livonia to further delineate the drainage area of the outfall as needed • Coordinate with the City of Livonia to schedule appointments, perform dye-test inspections and track results, if dye tests are needed. • Coordinate with the City for enforcement and correction on the illicit connections that may be discovered • Re-sample the Outfall after illicit connection corrections 	Bakewell Drain, an Upper Rouge tributary

	have been discovered/confirmed corrected. Figure 4 below identifies the investigation area	
--	---	--

City of Westland

ESD will work with the City of Westland and ARC staff to perform collaborative illicit discharge elimination plan (IDEP) investigations as described in Table 3.

Table 3: City of Westland Activities

MS4 Area	Advanced Investigation Activities	Receiving Water
SWOF-00278	ESD will revisit the outfall in 2020 to test for pH and remove the debris/material from the end of the outfall and to perform a follow up to see if the material reforms Figure 5 below identifies the investigation area	Wilson Drain, a Middle Rouge tributary

In addition, ESD will investigate the outfalls listed in Table 4, as funding allows.

Table 4. Outfalls Requiring Initial IDEP Investigations

Community	Category A Outfalls	Category B Outfalls
Livonia	L-1619	6038 13002 U2008231 M2008117 U2008238 2680 L3582
Plymouth		PY5 PY27
Wayne	WN-21A	
Total Outfalls	2	9

Category A: *E. coli* > 10,000 cfu/100 mL or unexplained physical characteristics.

Category B: *E. coli* between 5,001 and 10,000 cfu/100 mL.

IDEP Training

ESD will coordinate with ARC and SEMCOG staff to support the regional IDEP training activities.

Reporting

Written and/or oral summary of activities and results will be provided at ARC Technical Committees and a comprehensive final report will be prepared for use in the ARC’s Annual Report. The final report will include recommendations for additional investigations where appropriate.

Anticipated Collaborative Support Value: \$37,500 WCDPS in-kind services.



Figure 1



Figure 2

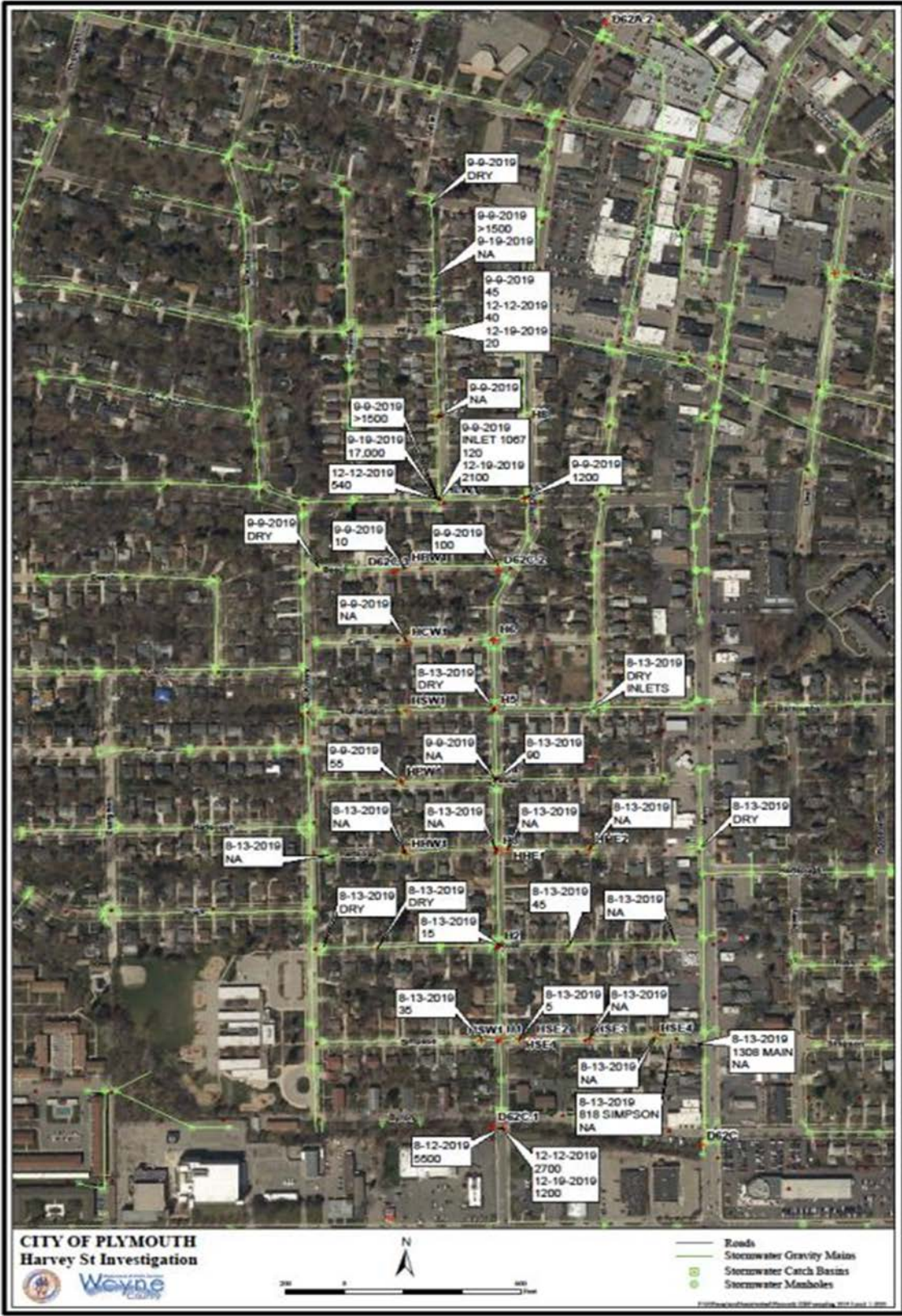


Figure 3



Figure 4

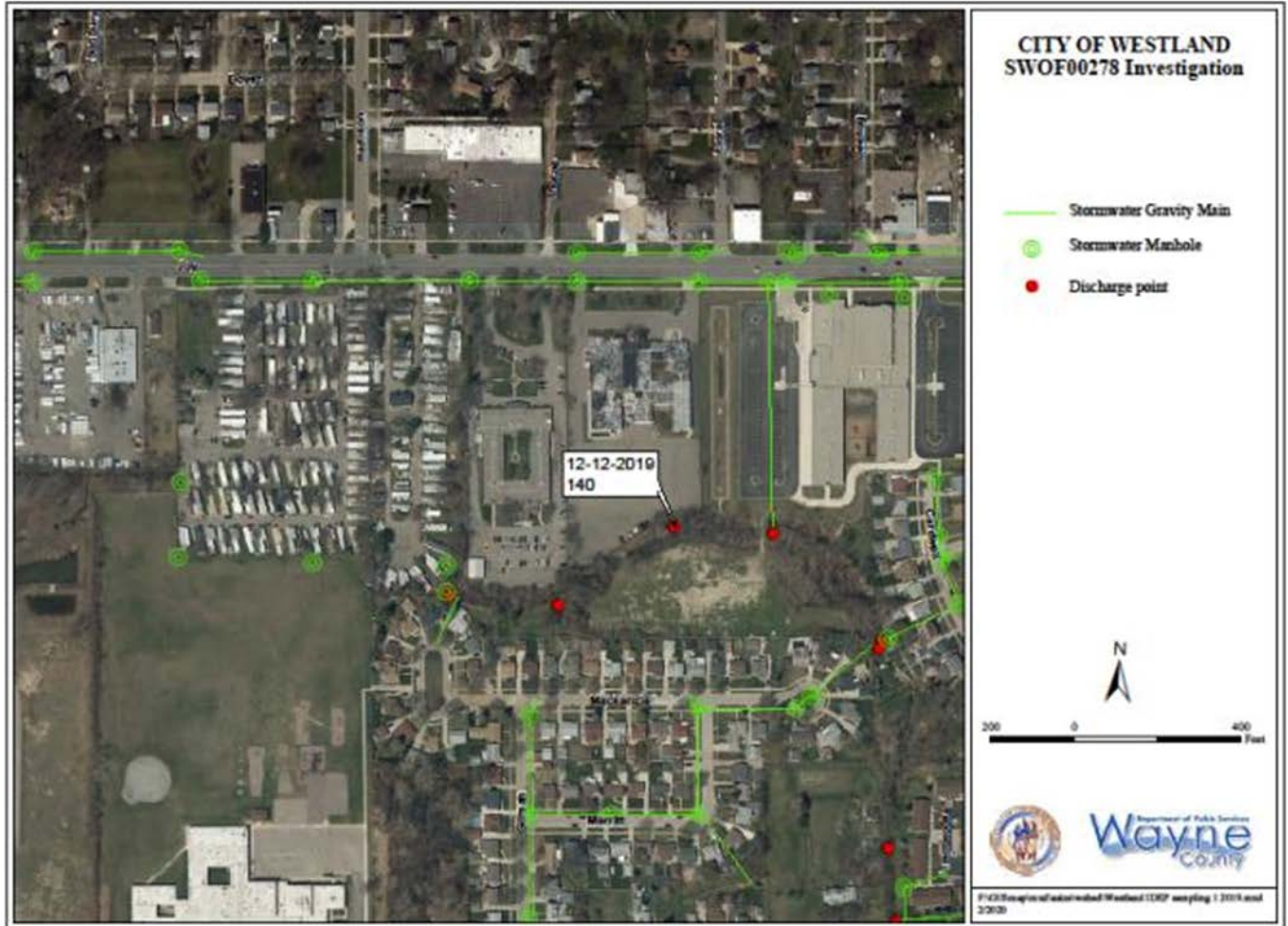


Figure 5