



TRANSFORMING THE ROUGE AREA OF CONCERN (AOC) FROM MOWED DOWN TO GROWN UP October 2010 – December 2012

EPA GLNPO Grant:	\$648,750
Required Match:	\$181,250
<i>City of Southfield</i>	<i>\$30,000</i>
<i>Wayne County</i>	<i>\$56,250</i>
<i>FOTR (Erb Foundation)</i>	<i>\$80,000</i>
<i>ARC (Public Education)</i>	<i>\$15,000</i>
Total Project Cost:	\$830,000

The green infrastructure projects to be funded by this grant will:

- Unite the major green corridors along the Rouge River,
- Create a framework to develop consistent priorities for restoration implementation, and
- Improve the Rouge River fisheries by creating green areas that will stabilize flow to encourage a healthy macroinvertebrate population. This will be achieved by improving, installing and enhancing riparian buffers, wetlands and upland habitat in the Rouge River Watershed.

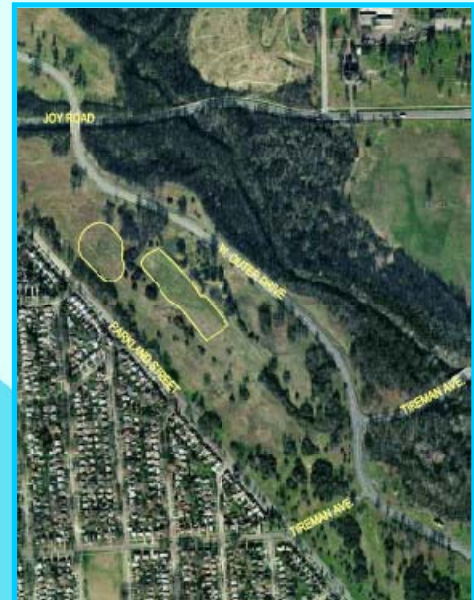
River Rouge Park (City of Detroit, Wayne County)

In the 1920s, the City of Detroit paid \$1.3 million dollars to purchase land from six farmers at the western edge of the city to be used for Rouge Park. Rouge Park is the City of Detroit's largest park at 1,184 acres, making it larger than New York City's Central Park. The Rouge River flows for more than two miles through this park and it encompasses 26,000 feet of the river's Main Branch.

This park contains an 18-hole golf course, 14 regulation baseball diamonds, including the Hank Aaron and Aurelio Rodriguez baseball fields, 12 playgrounds, 11 tennis courts and eight miles of bicycle trails, including one used by the Michigan Mountain Biking Association. Additionally, it is home to the large Alex Jefferson Model Airplane Field. The Brennan Pools feature two Olympic-sized pools side by side and a smaller pool. The park is home to varied wildlife and includes over 15 acres of native prairie created about 10 years ago.



This project will restore approximately five acres of the prairie and adjacent areas to native vegetation grow zones. The project will conduct a prescribed burn and reseeding and planting in spring, 2012. This project is being conducted in partnership with Friends of the Rouge (FOTR), Friends of Rouge Park and the City of Detroit.



Eliza Howell Park (City of Detroit, Wayne County)

This project will restore approximately 5 acres of mowed turf grass to native vegetation grow zones. This 200 acre park contains the main stem of the Rouge River and connects the green corridor along this branch.



Valley Woods Wetland Restoration (Nature Preserve at 10-Mile Road, Southfield, Oakland County)

This project will restore 7 acres of wetlands and the capacity of wetlands to store and retain storm water from the park.

This 27-acre preserve is bound on the northeast, where the Rouge River enters the preserve by two major roads. The river channel meanders through a relatively intact floodplain forest containing mature sycamore, oak and red ash trees. A variety of other tree species including maple and elm, complete the overstory composition of this significantly large, functioning floodplain forest. The plant communities within this preserve are diverse relative to many of the other park/preserve sites; a large emergent marsh is present in the northern end and a shrub-carr wetland is present at the southern end of the preserve. This preserve provides a variety of natural functions, including floodwater retention and storage, wildlife habitat and green space.



Lower Rouge and Upper Rouge Parkway (Wayne County)

This project will convert approximately 15 acres of managed turf grass to native vegetation grow zones within Wayne County Parks in the Upper and Lower Subwatersheds.

The Lower Rouge Parkway is nearly 1200 acres of riparian public lands beginning in the City of Dearborn at the downstream end of the Rouge River and extending to Canton Township at the upstream end. Approximately 15 miles of the Lower Rouge River flows through the Lower Rouge Parkway. Wayne County has identified approximately 20 acres of mowed turf area that could potentially be converted to native plant grow zones. With funding as proposed in this grant submittal a minimum of 5 acres would be converted to grow zone.

Lola Valley Park is within the Upper Rouge subwatershed and has approximately 1.5 miles of the Upper Rouge River flowing through the 58 acres of riparian parkland owned by Wayne County. Lola Valley Park is completely within Redford Township and winds through a residential neighborhood. The park is approximately one-half mile upstream from the City of Detroit's Eliza Howell Park. Wayne County has identified approximately 12 acres of mowed turf area immediately adjacent to the Upper Rouge River that could potentially be converted to native plant grow zone. With funding as proposed under this grant a minimum of 10 acres would be converted to grow zone.



For More Information Contact:

Alliance of Rouge Communities
James Ridgway, P.E., Executive Director
719 Griswold St., Suite 820, Detroit, Michigan 48226

Phone: 313-963-6600
Email: info@allianceofrougecommunities.com
Website: www.allianceofrougecommunities.com

