

# Rouge River Watershed 2011 Winter Stonefly Search



Ninety-five volunteers braved the cold during Friends of the Rouge's 2011 Winter Stonefly Search on January 22 hosted at the University of Michigan-Dearborn's Environmental Interpretive Center. A group of students from Eastern Michigan University participated for the third year in a row. For the first time, students in a new University of Michigan-Dearborn aquatics class also participated. Wayne County Department of Public Services Water Quality Management Division (WC) sampled an additional four sites and Schoolcraft College students sampled one site on their campus for a total of 29 sites.

*Stoneflies are sensitive indicators of healthy streams. Unlike other insects, winter stoneflies develop into adult flies in the winter. The Winter Stonefly Search is part of Friends of the Rouge's volunteer benthic macroinvertebrate monitoring program.*

Stoneflies were found at only five of the twenty-nine sites that were sampled and all were slender winter stoneflies (Capniidae). Three of these sites were on the Johnson Creek, the only cold water tributary of the Rouge and two sites were on Fowler Creek, a tributary to the Lower Rouge. In comparison, last year stoneflies were found at 20 of 29 sites,

Weather conditions had a huge impact on sampling this year. When temperatures stay below freezing for long periods of time, it becomes impossible to sample at sites with regular low flow and makes sampling less productive even at big river sites. Two teams were unable to sample at all at one of their sites because there was no flowing water even when they cracked the ice down to the streambed. Plans to resample sites when the weather got warmer were never carried out because temperatures did not moderate even several weeks after the sampling day. The stoneflies could be there but are obviously inactive and not hatching out at this time.

#### Lower Rouge

Fowler Creek had stoneflies at two sites: Prospect and Cherry Hill (Fowl1) and at Beck Road (Fowl2). None were found in Fellows Creek or any other sites on the Lower Branch despite being found there in past years.

#### Main Rouge

The Main Rouge was sampled at Civic Center Drive, 10 Mile, Bridge Street and Eight Mile and none were found. This was very disappointing in light of last year's first finding of a stonefly at Eight Mile.

#### Middle Rouge

Just three of the six Johnson Creek sites sampled had stoneflies (Arcadia Ridge, Fish Hatchery Park and Hines Drive) and all were close to the confluence with the Middle Rouge. None were found at other sites on the Middle Branch or in Tonquish Creek despite being found there in the past.

#### Upper Rouge

No stoneflies were found in the Upper Rouge or in Bell Creek.

Thank you to all the volunteers! The Winter Stonefly Search is part of Friends of the Rouge's long term volunteer monitoring program and is supported by the Alliance of Rouge Communities. Please join us for the Spring Bug Hunt on Saturday April 30, 2011.

**See the results on a Google map at [www.therouge.org](http://www.therouge.org)**

**Spring Bug Hunt - Sat. April 30 9am-4 pm UM-D EIC \*Register by 4/15\***

Team Leader Training April 9 (must have previously attended an event)

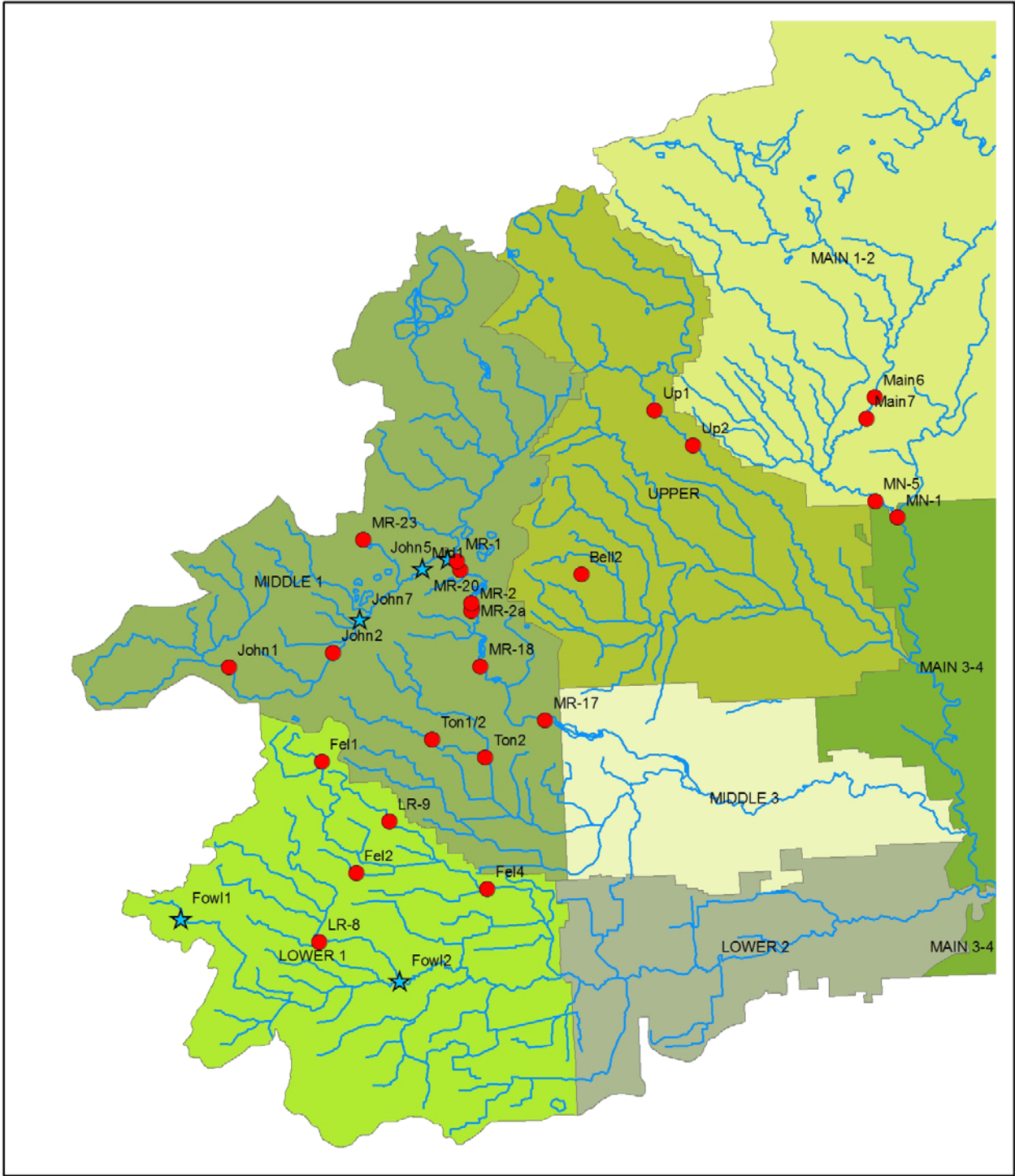
**[www.therouge.org](http://www.therouge.org)** (register online)

**(313) 792-9621**

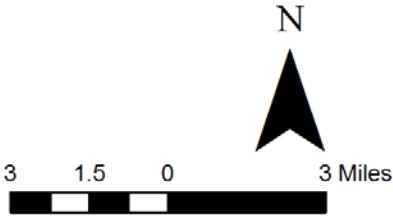
**[monitoring@therouge.org](mailto:monitoring@therouge.org)**

Coordinated by Friends of the Rouge and funded by the Erb Family Foundation. Additional data collection by Wayne County.

# Rouge River Winter Stonefly Search 2011



Stoneflies found?	
●	N
★	Y



## 2011 Winter Stonefly Search Results

BRANCH	SWS	city/township	FIELDID	Stream Name	Location/Site Desc	Latitude	Longitude	ST11
L	L1	Plymouth Twp	Fel1	Fellows Creek	Fellows Plymouth	42.35729	-83.53988	N
L	L1	Canton Twp	Fel2	Fellows Creek	South Fellows	42.31932	-83.5246	N
L	L1	Canton Twp	Fel4	Fellows Creek	Flodin Park	42.31346	-83.46471	N
L	L1	Superior Twp	Fowl1	Fowler Creek	Fowler Prospect	42.30423	-83.60516	Y
L	L1	Canton Twp	Fowl2	Fowler Creek	Fowler Beck	42.28226	-83.50515	Y
L	L1	Canton Twp	LR-8	Lower Rouge	Lower Proctor	42.295976	83.541846	N
L	L1	Canton Twp	LR-9	Fellows Creek	Beck Warren/Tonda Elem	42.33667	83.509238	N
M	M1	Salem Twp	John1	Johnson Creek	JC 5M Salem	42.3897	-83.58194	N
M	M1	Northville Twp	John2	Johnson Creek	JC 5M NV	42.39424	83.534404	N
M	M1	Northville Twp	John5	Johnson Creek	JC FH	42.4224	-83.49289	Y
M	M1	Northville Twp	John6	Johnson Creek	JC Hines	42.42546	-83.48138	Y
M	M1	Northville Twp	John7	Johnson Creek	JC Arcadia	42.405276	83.521992	Y
M	M1	Northville Twp	Mid1	Middle Rouge	Northville Rec Area	42.42177	-83.47546	N
M	M1	Northville Twp	MR-1	Middle Rouge	Northville Rec Area	42.42487	-83.47712	N
M	M1	Plymouth Twp	MR-17	Middle Rouge	I-275 clam bar	42.370466	83.437574	N
M	M1	Northville Twp	MR-2	Middle Rouge	Reservoir Road	42.408	-83.47076	N
M	M1	Northville Twp	MR-20	Middle Rouge	Waterford Bend	42.41054	-83.47079	N
M	M1	Northville Twp	MR-23	Johnson Creek	Maybury north	42.432475	83.520006	N
M	M1	Northville Twp	MR-2a	Middle Rouge	Reservoir Road W	42.4089	-83.4704	N
M	M1	Plymouth Twp	Ton1/2	Middle Rouge	Canton Ctr	42.36437	-83.48939	N
M	M1	Plymouth	Ton2	Tonquish Creek	Tonquish-Ann Arbor Rd	42.35809	-83.46507	N
M	M3	Plymouth Twp	MR-18	Middle Rouge	Springbrook Rec Area	42.388921	83.466928	N
MN	M1/2	Southfield	Main6	Main Rouge	Sfld	42.47886	-83.2845	N
MN	M1/2	Southfield	Main7	Main Rouge	Sfld 10 Mile	42.471598	83.288623	N
MN	M1/2	Southfield	MN-5	Main Rouge	Bridge Street	42.443614	83.284906	N
MN	M3/4	Detroit	MN-1	Main Rouge	Eight Mile	42.438056	83.274722	N
U	U	Livonia	Bell2	Bell Branch	Schoolcraft College	42.42	-83.42	N
U	U	Farmington Hills	Up1	Upper Rouge	Heritage Pk	42.47526	-83.38567	N
U	U	Farmington	Up2	Upper Rouge	Shiawassee Pk	42.46323	-83.36811	N