

Rouge River Watershed 2016 Winter Stonefly Search

Stoneflies are sensitive indicators of healthy streams. Unlike other insects, winter stoneflies develop into adult flies in the winter. The Winter Stonefly Search is part of Friends of the Rouge volunteer benthic macroinvertebrate monitoring program.

Ninety-two volunteers participated in Friends of the Rouge's 2016 Winter Stonefly Search on February 13th on one of the only frigid days of this mild winter. The University of Michigan-Dearborn's Environmental Interpretive Center hosted the event. Participating were four teams from Wayne State University, two teams from Marygrove College, two teams from the 4H Critter Science Investigation Club, one group from Franklin High School and many other volunteers.



Lovebug refreshments!

Volunteers were able to sample 26 sites in 13 teams. A total of 38 sites were sampled. Wayne County Department of Public Services Water Quality Management Division sampled an additional six sites, Schoolcraft College students sampled one site and Sue Thompson sampled five sites.

Stoneflies were found at ten of the thirty-eight sites (26%) (see map and Table 1). This was higher than the past two years. Nine sites had slender winter stoneflies (Capniidae) and two sites had Perlodid stoneflies (one site had both).

All stoneflies were found on the Middle or Lower branches. Other branches that were sampled included one site on the Main branch and three sites on the Upper branch including Bell Creek.

All but three of the ten sites with stoneflies were in the Johnson Creek watershed. Four of these were on Sump Creek, a Johnson Creek tributary in and around Maybury State Park. The highest number of stoneflies at one site was at MR-22 with 22 stoneflies. Both sites with Perlodid stoneflies were on Sump Creek. Two other Johnson Creek sites had stoneflies – John1 at Five Mile and Salem Road and John7 in the Arcadia Ridge subdivision. Surprisingly, the Marygrove College team at John1 also found a Rhyacophilid caddisfly, a type of caddisfly first identified in Michigan through Friends of the Rouge's program. Usually found in April, this is the earliest in the year they have been found.



Marygrove College students look for stoneflies at Johnson Creek



Wayne State University students on the Lower Rouge

On the Lower Rouge, Fellows Creek had one site with stoneflies (LR-9) and Fowler Creek had two sites with them (Fowl1 & Fowl2). Fowl2 has not had stoneflies since 2011.

Thank you to all the volunteers! The Winter Stonefly Search is part of Friends of the Rouge's long term volunteer monitoring program.

Spring Bug Hunt – Sat. April 16
9am-4 pm UM-D EIC

Register by 4/1

Team Leader Training March 19 (must have previously attended an event)

www.therouge.org (register online)

(313) 792-9621

spetrella@therouge.org

Stonefly Search 2016

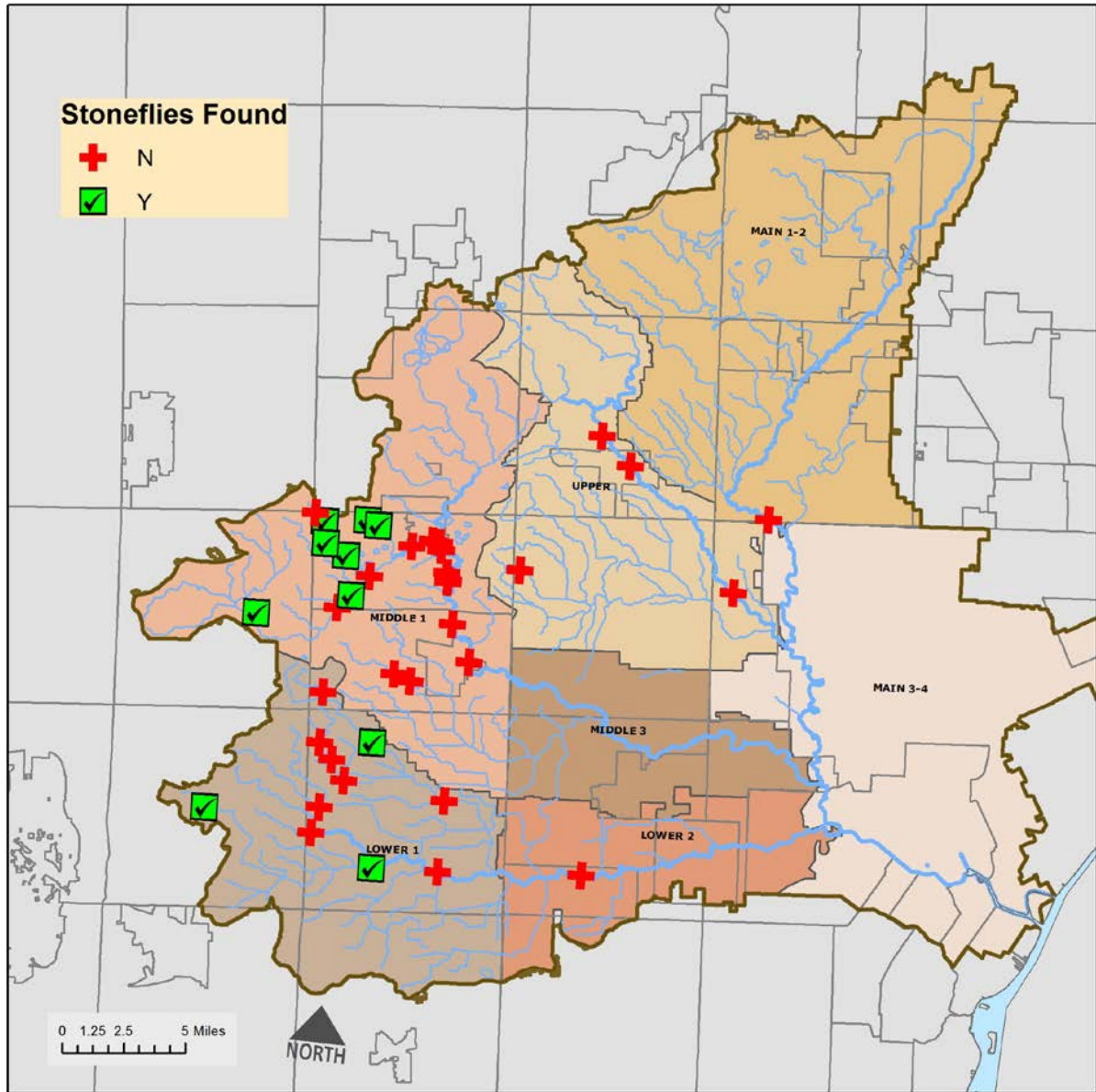


Table 1: 2016 Stonefly Search Results

Branch	FIELDID	Stream Name	Location	Collector*	ST16	Capnids	Perlodids
Lower	Fel1	Fellows Creek	Top of Hill Ct	FOTR	N		
Lower	Fel2	Fellows Creek	Vintage Valley	FOTR	N		
Lower	Fel4	Fellows Creek	Flodin Pk	FOTR	N		
Lower	Fel5	Fellows Creek	Warren Ridge	FOTR	N		
Lower	Fel6	Fellows Creek	Hanford Ridge	FOTR	N		
Lower	LR-9	Fellows Creek	Fellows Beck Warren	FOTR	Y	1	
Lower	Fowl1	Fowler Creek	Prospect	FOTR	Y	14	
Lower	Fowl2	Fowler Creek	Fowler Beck	FOTR	Y	2	
Lower	Low2	Lower Rouge	Cherry Hill	FOTR	N		
Lower	LR-12	Lower Rouge	Morton Taylor	WC	N		
Lower	LR-3	Lower Rouge	Goudy Park	WC	N		
Lower	LR-8	Lower Rouge	Ridge Proctor	FOTR	N		
Main	MN-5	Main Rouge	Bridge St	WC	N		
Middle	John1	Johnson Creek	5M Salem	FOTR	Y	10	
Middle	John2	Johnson Creek	5M NV	FOTR	N		
Middle	John3	Johnson Creek	6M NV	FOTR	N		
Middle	John5	Johnson Creek	Fish Hatchery Pk	FOTR	N		
Middle	John6	Johnson Creek	Hines	FOTR	N		
Middle	John7	Johnson Creek	Arcadia	FOTR	Y	3	
Middle	John8	Johnson Creek	Maybury Angell	FOTR	Y		3
Middle	MR-22	Johnson Creek	Maybury south	ST	Y	22	
Middle	MR-23	Johnson Creek	Maybury north	ST	Y	5	1
Middle	MR-25	Johnson Creek	Maybury East	ST	Y	8	
Middle	MR-26	Johnson Creek	Napier Rd	ST	N		
Middle	MR-27	Johnson Creek	Ridge	ST	Y	2	
Middle	Mid1	Middle Rouge	Northville Rec E	FOTR	N		
Middle	MR-1	Middle Rouge	Northville Rec W	FOTR	N		
Middle	MR-18	Middle Rouge	Springbrook Rec	FOTR	N		
Middle	MR-2	Middle Rouge	Reservoir Rd	WC	N		
Middle	MR-20	Middle Rouge	Waterford Bd	FOTR	N		
Middle	MR-2a	Middle Rouge	Reservoir Rd W	FOTR	N		
Middle	MR-3	Middle Rouge	Plym Riverside	WC	N		
Middle	Ton1	Tonquish Creek	Plym Twp Pk	FOTR	N		
Middle	Ton1/2	Tonquish Creek	Canton Ctr Rd	FOTR	N		
Upper	Bell2	Bell Branch	Schoolcraft College	Sch	N		
Upper	Up1	Upper Rouge	Heritage Park	FOTR	N		
Upper	Up2	Upper Rouge	Shiawasee Park	FOTR	N		
Upper	UR-1	Upper Rouge	Lola Valley	WC	N		

C*Collector - FOTR=Stonefly Search team, ST=Sue Thompson, WC=Wayne County